

OCEANSIDE

E17



THE GROVE

RESIDENCES

DETAILS

Bedrooms	4
Bathrooms	3
Car bays	2+

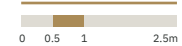
AREA

Internal	208m ²
Outdoor living	66m ²
Total living	274m²

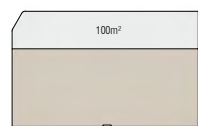
LOCATION

Residence	802
Similar	902
	1002
	1102

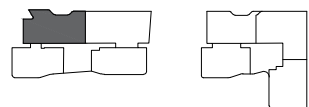
SCALE



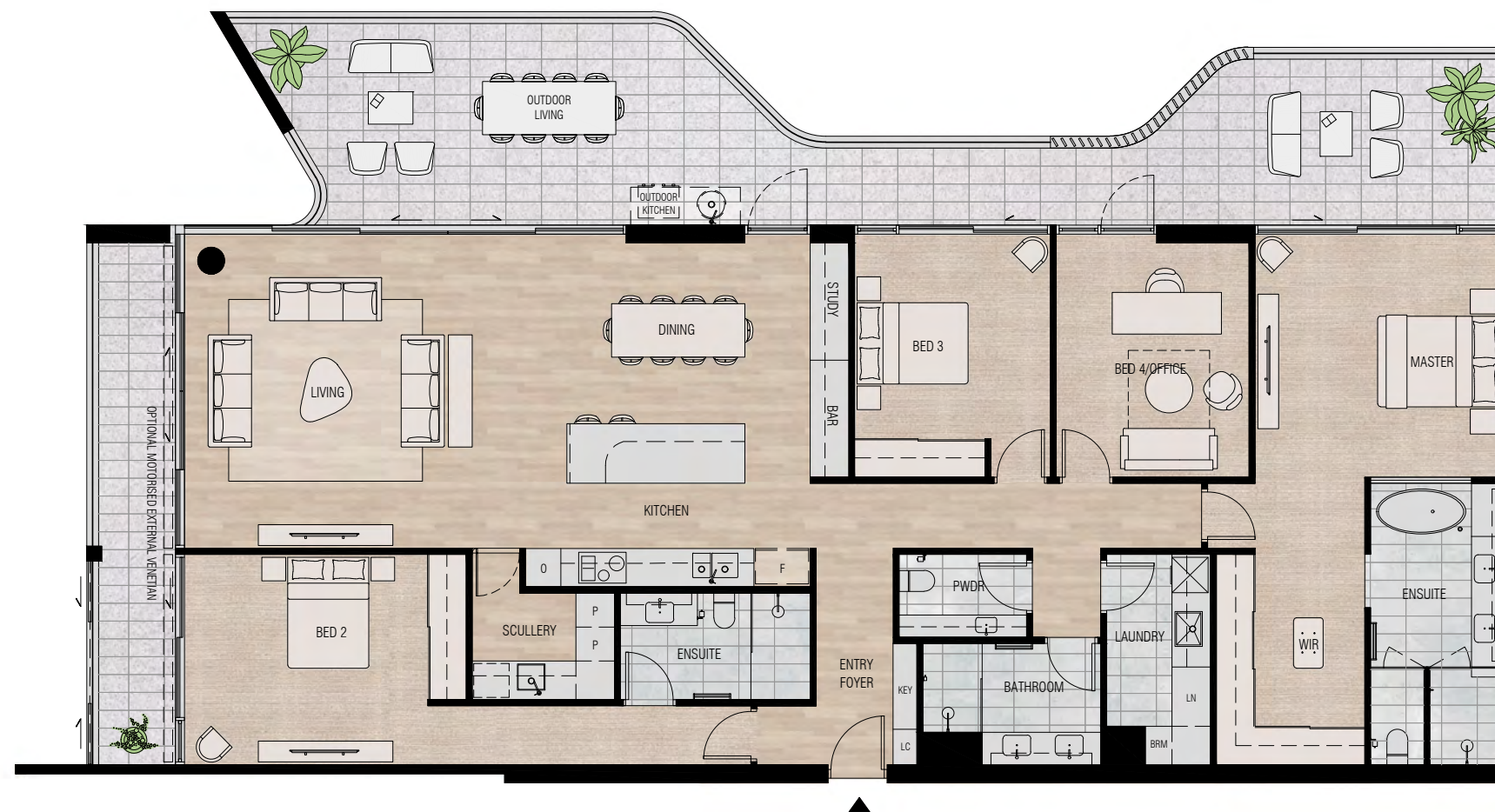
BALCONY CONFIGURATION



(A) Apt No 702



Disclaimer: Variations from Strata Plan may apply. Furniture is indicative. Shape and configuration of terraces, doors, windows, screens and ducts may differ from those illustrated. Areas of Residence given are based on architectural measurements. This varies from strata area as it is a different method of measuring the residence. Plans not to scale.



DESIGNER STATEMENT

This astonishing three bedroom, three bathroom apartment, with a northerly aspect, has a wonderful outlook, across a flush threshold and generous balconies, to the Claremont district to the north and, to the south, the Peppermint Grove district and Fremantle. With a large, well-wrought open plan living area, including a large kitchen island, scullery, separate office, substantial bathrooms, large separate laundry and a generous master bedroom with an expansive ensuite, the apartment has ample access to natural light and views through full height glazing.