

RIVERSIDE

D17



THE GROVE
RESIDENCES

DESIGNER STATEMENT

This lavish three bedroom, two and a half bathroom apartment has a wonderful outlook, across a flush threshold and generous balcony wrapping the living areas, to the Peppermint Grove district and Fremantle beyond to the south and, to the east, the Peppermint Grove district and Freshwater Bay. With a large, well-wrought open plan living area, including a large kitchen island, master office / lounge, substantial bathrooms, large separate laundry and a generous master bedroom with an expansive ensuite, the apartment has ample access to natural light and views through full height glazing.



DETAILS

Bedrooms	3
Bathrooms	2.5
Carbays	2

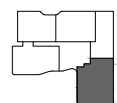
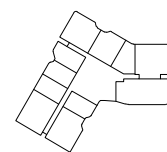
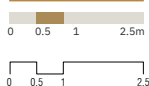
AREA

Internal	207m ²
Outdoor living	60m ²
Total living	267m²

LOCATION

Residence
1009

SCALE



Disclaimer: Variations from Strata Plan may apply. Furniture is indicative. Shape and configuration of terraces, doors, windows, screens and ducts may differ from those illustrated. Areas of Residence given are based on architectural measurements. This varies from strata area as it is a different method of measuring the Residence. Plans not to scale.