

RIVERSIDE

D9a



# THE GROVE

RESIDENCES

## DESIGNER STATEMENT

This lavish three bedroom, two bathroom apartment, with a northern aspect, has a wonderful outlook, across a flush threshold and generous garden terrace, to the Claremont district to the north. With a large, well-wrought open plan living area, including a large kitchen island, study, substantial bathrooms, large separate laundry and a generous master bedroom with ensuite, the apartment has ample access to natural light and views through full height glazing.



## DETAILS

Bedrooms	3
Bathrooms	2
Carbays	2

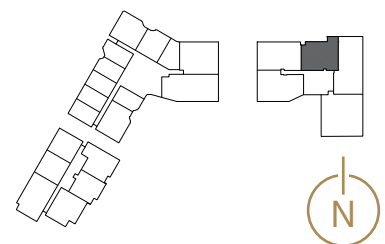
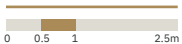
## AREA

Internal	160m <sup>2</sup>
Outdoor living	46m <sup>2</sup>
<b>Total living</b>	<b>206m<sup>2</sup></b>

## LOCATION

Residence  
415

## SCALE



Disclaimer: Variations from Strata Plan may apply. Furniture is indicative. Shape and configuration of terraces, doors, windows, screens and ducts may differ from those illustrated. Areas of Residence given are based on architectural measurements. This varies from strata area as it is a different method of measuring the Residence. Plans not to scale.