

RIVERSIDE

E13



THE GROVE

RESIDENCES

**DETAILS**

Bedrooms	4
Bathrooms	2.5
Car bays	2+

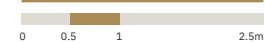
**AREA**

Internal	184m <sup>2</sup>
Outdoor living	36m <sup>2</sup>
<b>Total living</b>	<b>220m<sup>2</sup></b>

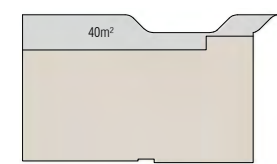
**LOCATION**

Residence	1007
Similar	1108

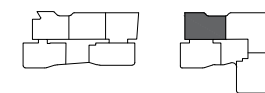
**SCALE**



**BALCONY CONFIGURATION**



(B) Apt No 907



Disclaimer: Variations from Strata Plan may apply. Furniture is indicative. Shape and configuration of terraces, doors, windows, screens and ducts may differ from those illustrated. Areas of Residence given are based on architectural measurements. This varies from strata area as it is a different method of measuring the residence. Plans not to scale.

**DESIGNER STATEMENT**

This astonishing four bedroom, two and a half bathroom apartment, with a northerly aspect, has a wonderful outlook, across a flush threshold and generous balconies, to the Claremont district to the north and, to the south, the Peppermint Grove district and Fremantle. With a large, well-wrought open plan living area, including a large kitchen island, scullery, separate office, separate lounge, substantial bathrooms, large separate laundry and a generous master bedroom with an expansive ensuite, the apartment has ample access to natural light and views through full height glazing.

