

BRIGHTON

E6



THE GROVE

RESIDENCES

DETAILS

Bedrooms	4
Bathrooms	2.5
Car bays	2

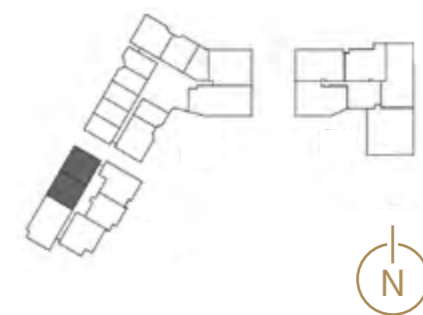
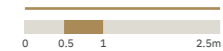
AREA

Internal	202m ²
Outdoor living	63m ²
Total living	265m²

LOCATION

Residence	421
-----------	-----

SCALE



Disclaimer: Variations from Strata Plan may apply. Furniture is indicative. Shape and configuration of terraces, doors, windows, screens and ducts may differ from those illustrated. Areas of Residence given are based on architectural measurements. This varies from strata area as it is a different method of measuring the residence. Plans not to scale.



DESIGNER STATEMENT

This extraordinary three bedroom, two and a half bathroom apartment, has a wonderful outlook, across a flush threshold and generous balcony, to the Cottesloe district and the ocean. With a large, well-wrought open plan living area, including a large kitchen island, scullery, separate office, substantial bathrooms, large separate laundry and a generous master bedroom with an expansive ensuite, the apartment has ample access to natural light and views through full height glazing.