

BRIGHTON

D3



THE GROVE

RESIDENCES

DESIGNER STATEMENT

This lavish three bedroom, two bathroom apartment, has a generous balcony connecting the apartment, across a flush threshold, to the green heart of the development: Brighton Park and the Discovery Garden and a view, with the site's elevated vantage, to the Peppermint Grove district and Fremantle on the upper floors. With a large, well-wrought open plan living area, including a large kitchen island, substantial bathrooms, large separate laundry and a generous master bedroom with an expansive ensuite, the apartment has ample access to natural light and views through full height glazing.



DETAILS

Bedrooms	3
Bathrooms	2
Carbays	2

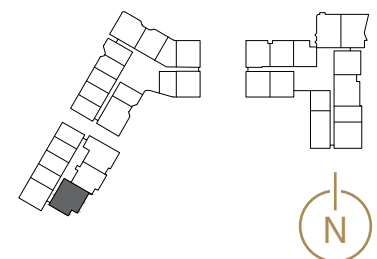
AREA

Internal	143m ²
Outdoor living	29m ²
Total living	172m²

LOCATION

Residence	Similar
128	232
	331
	419

SCALE



Disclaimer: Variations from Strata Plan may apply. Furniture is indicative. Shape and configuration of terraces, doors, windows, screens and ducts may differ from those illustrated. Areas of Residence given are based on architectural measurements. This varies from strata area as it is a different method of measuring the Residence. Plans not to scale.