



Three
Bedroom
Residences

PARK

D2c



THE GROVE

R E S I D E N C E S

DESIGNER STATEMENT

This lavish three bedroom, two bathroom apartment has a wonderful outlook, across a flush threshold and generous balcony, to leafy Stirling Park and a view to the Cottesloe district and the ocean. With a large, well-wrought open plan living area, including a large kitchen island, substantial bathrooms, large separate laundry and a generous master bedroom with ensuite, the apartment has ample access to natural light and views through full height glazing.



DETAILS

Bedrooms	3
Bathrooms	2
Carbays	2

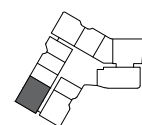
AREA

Internal	139m ²
Outdoor living	39m ²
Total living	178m²

LOCATION

Residence	Similar
503	603

SCALE



Disclaimer: Variations from Strata Plan may apply. Furniture is indicative. Shape and configuration of terraces, doors, windows, screens and ducts may differ from those illustrated. Areas of Residence given are based on architectural measurements. This varies from strata area as it is a different method of measuring the Residence. Plans not to scale.

OCEANSIDE

D5



THE GROVE

R E S I D E N C E S

DESIGNER STATEMENT

This lavish three bedroom, two bathroom apartment, with a northern aspect, has a wonderful outlook, across a flush threshold and generous balconies, to the Claremont district to the north and the Cottesloe district and the ocean to the west. With a large, well-wrought open plan living area, including a large kitchen island, scullery, substantial bathrooms, large separate laundry and a generous master bedroom with ensuite, the apartment has ample access to natural light and views through full height glazing.



DETAILS

Bedrooms	3
Bathrooms	2
Carbays	2

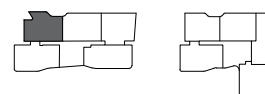
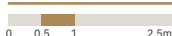
AREA

Internal	143m ²
Outdoor living	48m ²
Total living	191m²

LOCATION

Residence	Similar
802	902
	1002
	1102
	1202
	1302

SCALE



Disclaimer: Variations from Strata Plan may apply. Furniture is indicative. Shape and configuration of terraces, doors, windows, screens and ducts may differ from those illustrated. Areas of Residence given are based on architectural measurements. This varies from strata area as it is a different method of measuring the Residence. Plans not to scale.

RIVERSIDE

D9a



THE GROVE

RESIDENCES

DESIGNER STATEMENT

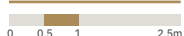
This lavish three bedroom, two bathroom apartment, with a northern aspect, has a wonderful outlook, across a flush threshold and generous garden terrace, to the Claremont district to the north. With a large, well-wrought open plan living area, including a large kitchen island, study, substantial bathrooms, large separate laundry and a generous master bedroom with ensuite, the apartment has ample access to natural light and views through full height glazing.



DETAILS

Bedrooms	3
Bathrooms	2
Carbays	2

SCALE

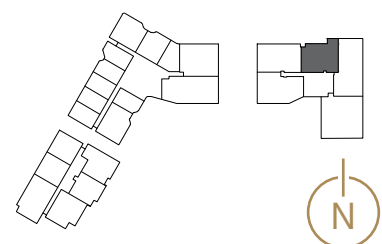


AREA

Internal	160m ²
Outdoor living	46m ²
Carbays	26m ²
Store	5m ²
Total	237m²

LOCATION

Residence
415



Disclaimer: Variations from Strata Plan may apply. Furniture is indicative. Shape and configuration of terraces, doors, windows, screens and ducts may differ from those illustrated. Areas of Residence given are based on architectural measurements. This varies from strata area as it is a different method of measuring the Residence. Plans not to scale.



THE GROVE

RESIDENCES

PARK &
OCEANSIDE

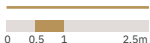
D10



DETAILS

Bedrooms	3
Bathrooms	3
Carbays	2

SCALE

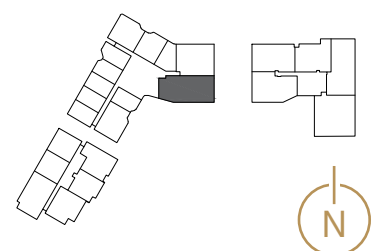


AREA

Internal	160m ²
Outdoor living	52m ²
Total living	212m²

LOCATION

Residence	Similar
511	611
	705
	805
	905
	1005
	1105
	1205
	1305



Disclaimer: Variations from Strata Plan may apply. Furniture is indicative. Shape and configuration of terraces, doors, windows, screens and ducts may differ from those illustrated. Areas of Residence given are based on architectural measurements. This varies from strata area as it is a different method of measuring the residence. Plans not to scale.



Double Living &
Four Bedroom
Residences

PARK

E12

DETAILS

Bedrooms	4
Bathrooms	2
Car bays	2+

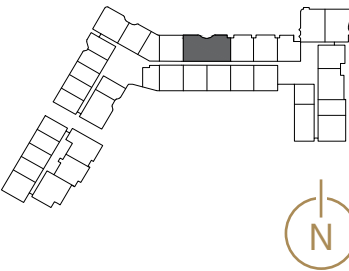
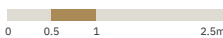
AREA

Internal	199m ²
Outdoor living	53m ²
Total living	252m ²

LOCATION

Residence	212
Similar	312

SCALE



Disclaimer: Variations from Strata Plan may apply. Furniture is indicative. Shape and configuration of terraces, doors, windows, screens and ducts may differ from those illustrated. Areas of Residence given are based on architectural measurements. This varies from strata area as it is a different method of measuring the residence. Plans not to scale.

DESIGNER STATEMENT

This astonishing three bedroom, three bathroom apartment, with a northerly aspect, has a wonderful outlook, across a flush threshold and generous balconies, to the Claremont district to the north and, to the south, the Peppermint Grove district and Fremantle. With a large, well-wrought open plan living area, including a large kitchen island, scullery, separate office, separate lounge, substantial bathrooms, large separate laundry and a generous master bedroom with an expansive ensuite, the apartment has ample access to natural light and views through full height glazing.

